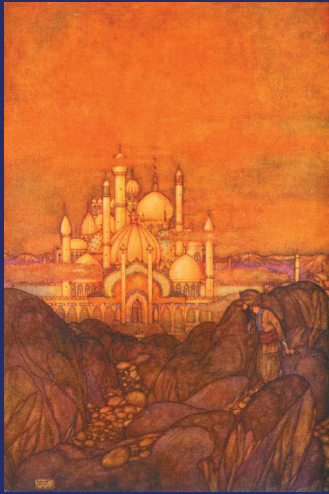


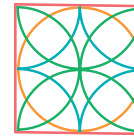
Empowerment Arts and its Mything Mysteries Series presents *Arabian Nights Harlequin Days*. This is a family camp weekend in the beautiful mountain woods of Vermont, 10 minutes from Brattleboro.



It begins with a story... *Sheharezad* is our mythic storyteller... A *magic carpet* transports us to ships on the rolling seas or to underground treasure-filled palaces... We belly dance to the rhythms of the drum.... We tell our own stories and find our own treasures in these metaphors and symbols for our mythic costume, wand or crowns. Enchantment and mystery in the forest of Vermont! The threads from the fanciful, sometimes dramatic tales, reminiscent of the many stories from *Arabian Nights*, are woven together and combined with the colorful, playful trickster symbols to create the contrast and texture for this weekend.

Join us for the fun... the magic...  
the mystery...

Come dance under the stars...  
and swim in the July sun.



Empowerment Arts Initiative  
21 Williston Street  
Brattleboro, VT 05301

Empowerment Arts Initiative

## Family Camp Weekend July 7 - 9, 2006

Parents and children can enjoy classes and activities separately and together.

Childcare provided for little ones.

A fantastically  
precious jewel  
transforms  
those it  
touches... art,  
trickery, magic,  
& craft swirl  
together to form



## Arabian Nights



## Harlequin Days

storytelling, drumming, belly dancing,  
"Circle of Mystery", mythic costuming,  
Sword Dance presentation, magic wands,  
harlequin crowns...

swim... play... dream under the stars...

Hosted by  
**Camp Waubanong**  
Guilford, Vermont

## Camp Waubanong in Guilford, Vermont

This is a rustic, wilderness setting with open sleeping shelter/cabins and tenting spaces. The land has a pond, a large dining hall for activities and a built-in swimming pool. It is a small and intimate setting with opportunities to share this artful weekend in the arms of Mother Nature.

**Facilitators and teachers:** Local talented and skilled professionals provide well crafted activities. We are utilizing the metaphors and symbols found in story and archetypes to promote meaningful opportunities for expression. This program is designed to encourage all levels of creativity and spontaneity. Facilitators and activities will be posted on the weblink: <http://empowerment-arts.org/nights-info.html>

**What to Bring:** We will send a packet if you don't have internet service. Otherwise please go to the link: <http://empowerment-arts.org/nights-info.html>

**Food / Meals:** We will provide healthy, simple meals for your enjoyment. We will provide vegetarian alternatives, if requested in advance. If you have a special diet, please let us know at least 2 weeks in advance. We will try to accommodate special needs when possible.

**Childcare / Parent Responsibility:** Parents or guardians are responsible for their own children. Childcare will be provided for the number of hours listed in the table, it may be possible to arrange additional childcare directly with caregivers. However, there will be no "camp counselors", so when children are not at an activity or childcare, parents are responsible for their behavior and safety.

Camp Waubanong is on the border of Guilford and West Brattleboro. More info: <http://campwaubanong.org>  
 Directions: (From I-91 exit 2 or from Brattleboro)  
 Go west on Route 9. Turn left on Greenleaf St. just after the 7-eleven store. After ~1 mile, turn left on Hinesburg Rd. (at stop sign with fruit stand ahead.) Follow Hinesburg Rd. about 2 more miles until you see a camp sign on the right (exactly 3.2 miles from the 7-eleven.) Turn right there on Melchen Rd. Go up hill slowly for 1 mile. Turn left at camp sign. Follow for 1/4 mile, and turn right into camp driveway at sign.

## Friday, 6 PM - Sunday 12 PM

<b>Fri. 6 - 9:00pm</b>	<b>Evening Session A</b>
<b>Sat. 8 - 9:30 am</b>	<b>Breakfast</b>
<b>9:30am - 1 pm</b>	<b>Morning Session B</b>
<b>1 - 2:30 pm</b>	<b>Swim / Lunch</b>
<b>2:30 - 5 pm</b>	<b>Afternoon Session C</b>
<b>5 - 7:00pm</b>	<b>Free / Swim / Dinner</b>
<b>7 - 9:00 pm</b>	<b>Evening Session D</b>
<b>Sun. 8 - 9 am</b>	<b>Breakfast</b>
<b>9 - 11 am</b>	<b>Morning Session E</b>

Morning and afternoon sessions: Classes and activities with different age ranges. Also, childcare / activities for 2 - 5 year olds. Pool will be open with life-guard for 2 periods on Saturday. Weekend includes: 2 overnights, 4 snacks, 3 meals (Sat.), Sun. breakfast, 2 evening sessions with dancing, drumming, campfire and "Circle of Mystery" activity with a procession and Sword dance. Day rates include meals for that day.

<b>15-Adult</b>	Fri. - Sun \$150 + \$20 materials	
	Sat. day rate \$130 + \$15 materials	
	Sun. day rate \$40 + \$10 materials	
<b>12 - 14</b>	Fri. - Sun \$115 + \$20 materials	
	Sat. day rate \$95 + \$15 materials	
	Sun. day rate \$35 + \$10 materials	
<b>7 - 11</b>	Fri. - Sun \$100 + \$20 materials	
	Sat. day rate \$85 + \$15 materials	
	Sun. day rate \$30 + \$10 materials	
<b>4 - 6</b>	Fri. - Sun \$80 + \$20 materials	
	Sat. day rate \$70 + \$15 materials	
	Sun. day rate \$25 + \$10 materials	
<b>2 - 3</b>	Fri. - Sun \$60 (childcare 9 hrs)	
	Sat. day rate \$45 (childcare 6 hrs)	
	Sun. day rate \$15 (childcare 2 hrs)	

*Partial work exchange / scholarships may be available. Submit request with registration or call for availability.*

**Register by June 5 for 10% discount (except materials)**

Cut along left fold, indicate in right hand column number of participants in each age group, and include appropriate information and payment with registration.

***This form can be downloaded from internet:***  
<http://empowerment-arts.org/nights-days-flyer.pdf>

## Family Camp Registration Arabian Nights Harlequin Days July 7 - 9, 2006

Emergency contact:

Parent/Guardian Name:

Street Address or PO Box

Town State Zip

Email

Daytime phone Evening phone

Camper#1 Name Age or Range (i.e. 15-Adult)

Camper#2 Name Age

Camper#3 Name Age

Camper#4 Name Age

Put corresponding camper # from above in box (in the table to the left) designating full/Sat./Sun. status and fill in amount in section below to calculate camp cost. (include materials fees)  
 If you have 2 campers in same age group, box will have 2 numbers.

#1 camp cost: Materials' fee:

#2 camp cost: Materials' fee

#3 camp cost: Materials' fee

#4 camp cost: Materials' fee

Total camp cost\*: Total Materials cost:

**10% discount of camp cost only if balance is paid by June 5th  
 \*\$50 non-refundable family deposit required with registration.**

Balance due June 14th. Make checks to: *Empowerment Arts*  
 To pay with credit card via PayPal, go to link below. You still need to send a hard copy registration form when using PayPal:  
<http://empowerment-arts.org/nights-info.html>  
 Put name in optional message box with PayPal form.

Send Deposit or Full Payment with Registration to:

Jeanne Marie Sutherland  
 21 Williston St.  
 Brattleboro, VT 05301

More info: 802-380-8777 [info@empowerment-arts.org](mailto:info@empowerment-arts.org)